

# JALFUTURE SAS ESD JIJI414



S3 CI SRC  
EN ISO 20345:2011  
35 to 48



- Recycled microfiber upper
- PU/PU sole Biomass Balance de BASF®
- ESD / Dissipative
- Polymer toe cap type B and midsole no metallic



- Urban sport-style safety shoe incorporating **MAXI-Soft Duo™** anti-fatigue technology designed for work stations that require standing for long periods (Upright or sustained activity).
- Safety shoe protecting the electronic devices against electrostatic discharge phenomena. Electrostatic dissipative shoes ESD Environmental Class II tested according to **EN 61340-4-3** and **EN 61340-5-1**.
- Upper in recycled microfibre (40% recycled polyamide). Black color. Fluorescent markings on the back of the heel.
- Upper lined in breathable **3D Surf** mesh with honeycomb structure to improve the peripheral ventilation of the foot, dries out rapidly.
- Padded tongue for good instep protection, combined with two side bellows to prevent any dirt from getting into the boots.
- Padded ergonomic collar in compact flexible foam, lined for extra comfort and better ankle and Achilles tendon protection.
- Lace up on seven pairs of no metallic eyelets. Black laces 160 cm.
- Perforated insole for enhanced comfort : **MAXI-Soft Duo™ Green** composed of a soft **Biomass Balance BASF® Dynamic PU** midsole with heat sensitive memory foam and a maximum size **Biomass Balance Elastopan insert** that improves weight distribution by reducing pressure points and absorbs and relieves body stress associated with a prolonged standing working position and when walking. Anatomical, breathable and fitted with the **Link ESD™ system**, an innovative multi-contact, static electricity dissipater. (Patent pending).
- Ergonomic shoe, with broad synthetic polymer toe cap **Springtane-B™**. Impact resistance to 200 Joules. Minimum height after test  $\geq 4\text{mm}$  in relation to the Type A toe cap in accordance with Standard 22568-2 : 2021.
- Stab-resistant structural insole and liner in **FleXtane™ By Jallatte ESD** (50% recycled polyester), in compliance with standard **22568-4 : 2021**, antistatic, **100% composite**. Sewn directly onto the upper and covering **100% of the foot for total protection**.
- Heel stiffener to reinforce the heel seat.
- BASF® PU / PU sole BMB | BioMass Balance Certifié EU-REDcert²** with an urban sport design, linear profile and excellent slip resistance. Extremely light and flexible support base.



**Slip resistance tests results** EN Standard :  
EN ISO 20345 : 2011 **Requirement SRC**

**SRA** Test ground : ceramic / lubricant : water and detergent

On flat **0,62** (>0,32) – On the heel **0,48** (>0,28)

**SRB** Test ground steel/lubricant : glycerine

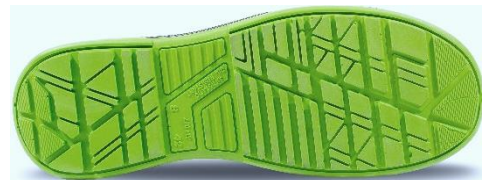
On flat **0,23** (>0,18) – On the heel **0,19** (>0,13)



**BMB**  
**EU-REDcert²**

- 100% substitution of fossil resources with **renewable and sustainable** raw materials.
- Independently certified approach.
- Reduction of greenhouse gas emissions.
- Same properties and quality level as traditional safety shoes.

|                |   |                 |                 |                 |
|----------------|---|-----------------|-----------------|-----------------|
| Weight         | Gross weight (42) : 1436 g / Net weight (42) : 1220 g |                 |                 |                 |
| Size           | 35 to 39  | 40 to 42        | 43 to 45        | 46 to 48        |
| Packaging      | 5 pairs   | 10 pairs        |                 | 5 pairs         |
| Box shoes (mm) | 340 x 210 x 133                                       |                 | 340 x 245 x 133 |                 |
| Cartons (mm)   | 687 x 226 x 350                                       | 687 x 432 x 348 | 689 x 511 x 351 | 689 x 260 x 348 |



www.jallatte.com